

Figure (1): M-Mode echocardiography for the measurement of left ventricular dimensions in systolic and diastolic phase

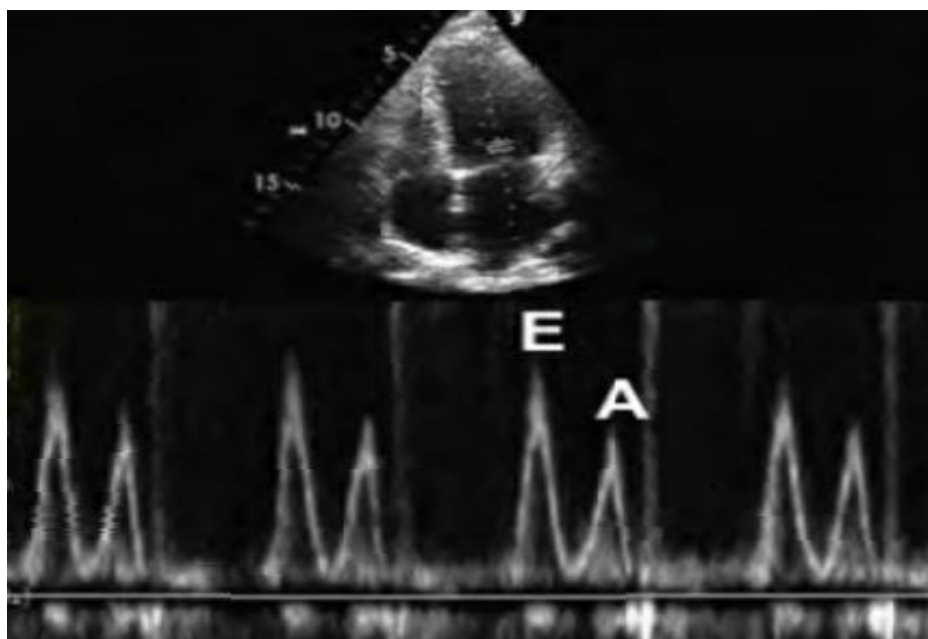


Figure (2): Pulse Doppler echocardiography across the mitral valve for the assessment of diastolic function

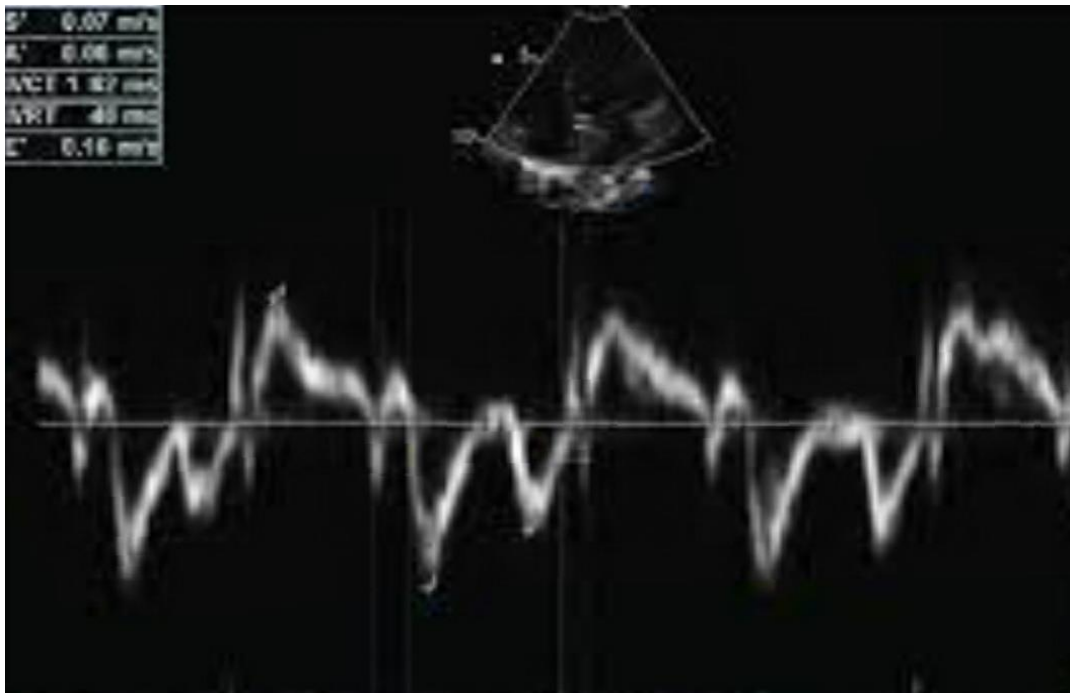


Figure (3): Tissue Doppler imaging for the assessment of systolic and diastolic function of the LV

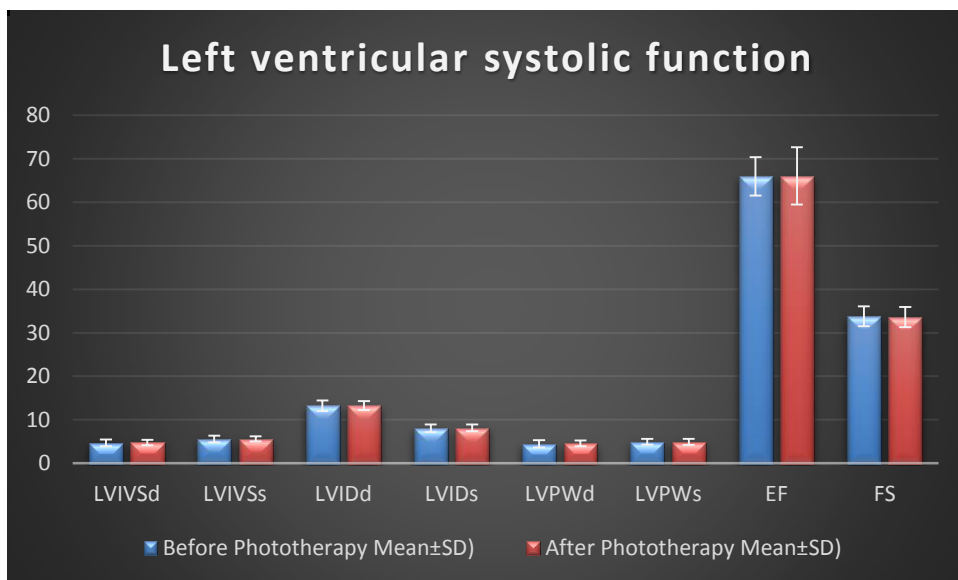


Figure (4): Comparison of the M-mode echocardiography parameter of LV systolic function before and after phototherapy

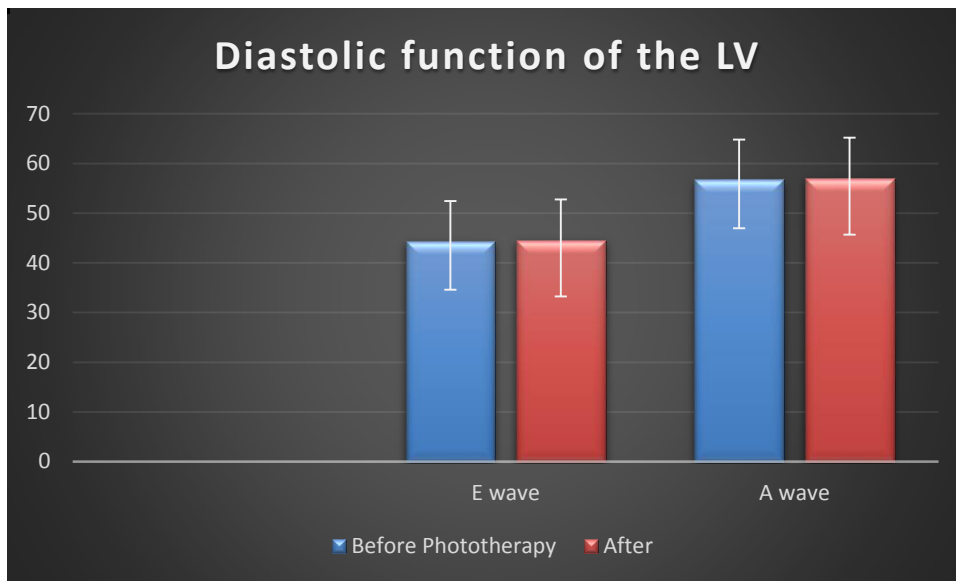


Figure (5): Comparison of the pulse Doppler echocardiography parameter for LV diastolic function before and after phototherapy

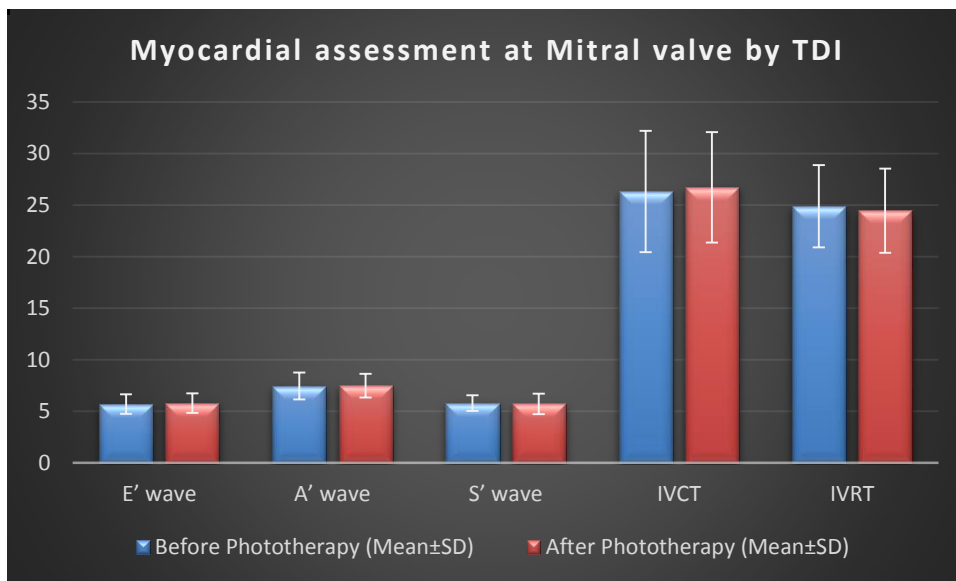


Figure (6): Comparison of the tissue Doppler imaging parameter, before and after phototherapy